



GAT MONTHLY MEMBERSHIP PROGRESS REPORT

Results as of: 6/30/2023

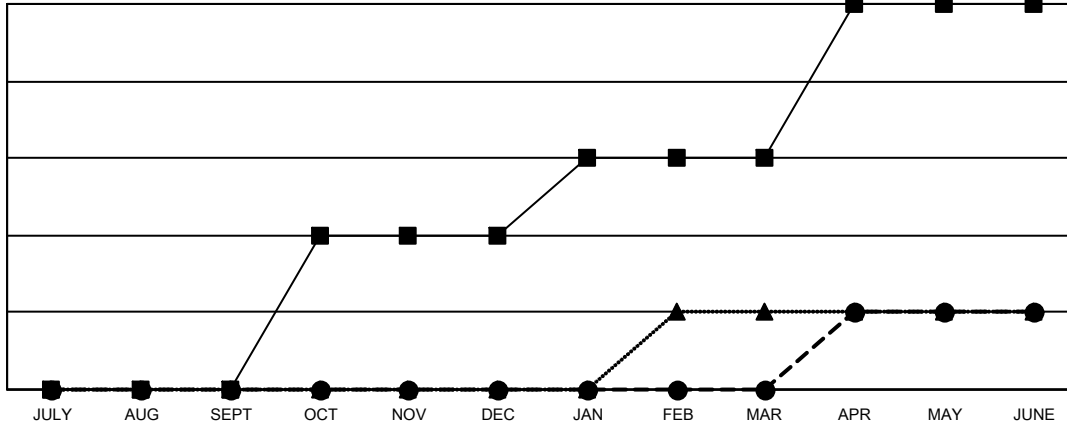
Multiple District 21

LOCATION: ARIZONA

Clubs			
RESULTS FOR 2022-2023			
QUARTER	NEW CLUB GOAL	NEW CLUBS	DROPPED CLUBS
JULY/AUG/SEPT	0	0	2
OCT/NOV/DEC	2	0	0
JAN/FEB/MAR	1	0	1
APR/MAY/JUNE	2	1	3

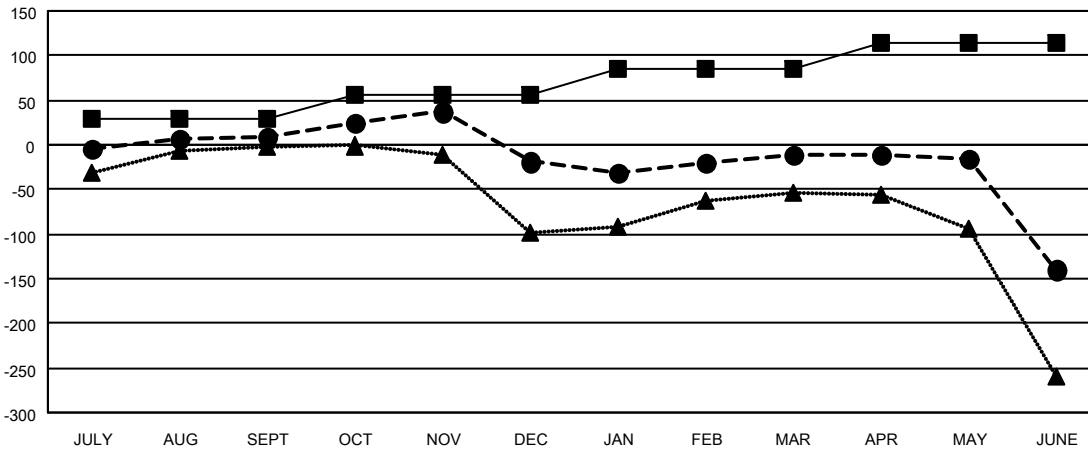
Members			
RESULTS FOR 2022-2023			
QUARTER	MEMBER GROWTH NET GOAL	MEMBER GROWTH ACTUAL	DROPPED MEMBERS ACTUAL (including transfers)
JULY/AUG/SEPT	30	87	62
OCT/NOV/DEC	25	80	99
JAN/FEB/MAR	30	97	78
APR/MAY/JUNE	30	133	241

GOALS AND ACTUAL NEW CLUBS CUMULATIVE



- CURRENT YEAR GOALS FOR NEW CLUBS
- CURRENT YEAR ACTUAL NEW CLUBS
- ▲- LAST YEAR ACTUAL NEW CLUBS

GOALS AND ACTUAL MEMBERS CUMULATIVE



- MEMBER GROWTH NET GOAL
- MEMBER GROWTH ACTUAL
- ▲- LAST YEAR MEMBERSHIP ACTUAL

DROPPED CLUBS: 6	69 CLUBS OF 107 ADDED 1 OR MORE NEW MEMBERS	GENDER DISTRIBUTION
DROPPED MEMBERS	CLICK HERE FOR CUMULATIVE MEMBERSHIP DATA	MALE 1,210 (52.43%)
DECEASED 39		FEMALE 1,098 (47.57%)
CLUB CANCELLED 19		NON BINARY 0 (0.00%)
OTHER 422		PREFER NOT TO ANSWER 0 (0.00%)
TOTAL 480		TOTAL FAMILY UNIT MEMBERS 567
		FAMILY MEMBERS PAYING HALF DUES 305